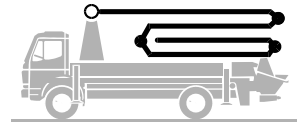


Truck-mounted concrete pump

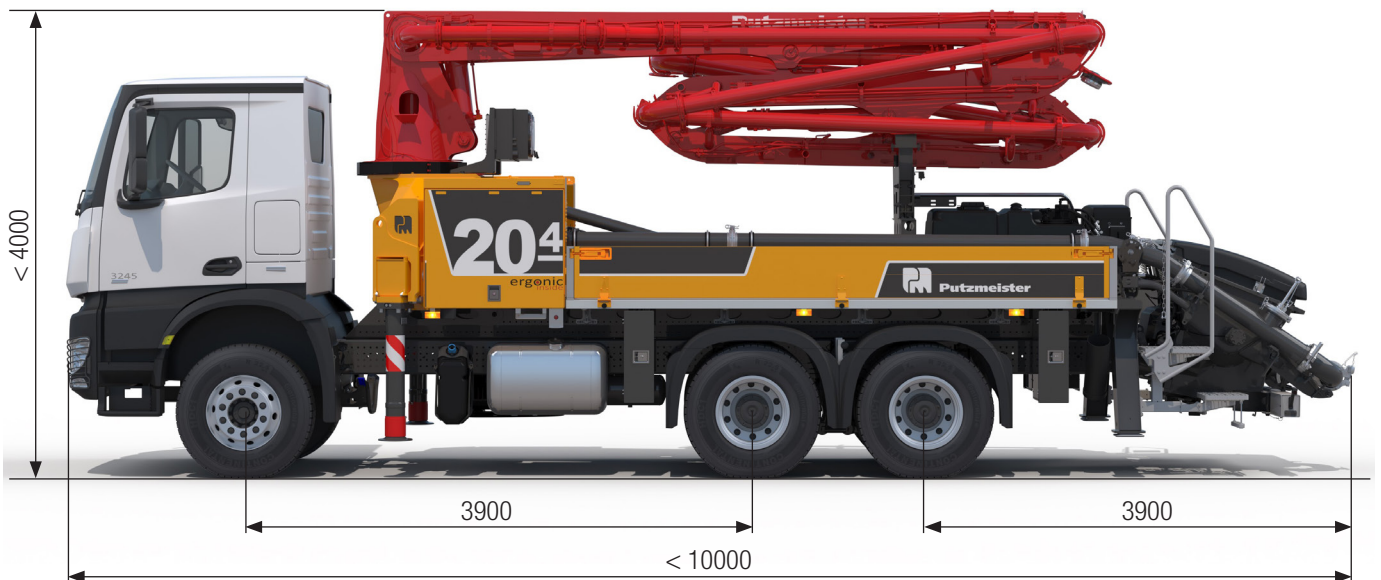
BSF 20-4.11 H

.15 i LS

Output up to 150 m³/h
 Delivery pressure up to 85 bar*



ergonic[®]
 inside **3**



Note: Standard version. Dimensions and weights depend on truck, pump model and equipment.
 Dimensions in mm. Example based on Mercedes Benz Arocs 2636 with a 15 i LS core pump.
 For illustration only.

Technical data

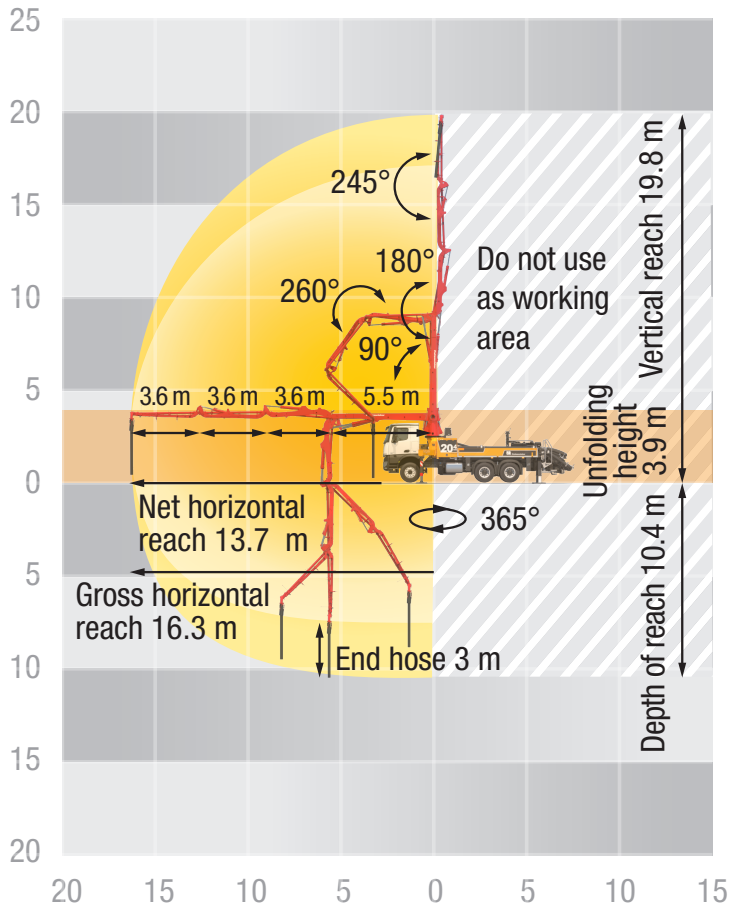
Boom M 20-4			
Sections			4
Reach height	m		19.8
Horizontal reach	gross	m	16.3
	net	m	13.7
Reach depth max.	m		10.4
Unfolding height	m		3.9**
End hose length	m		3
Folding system			ZR
Delivery line			DN 125

Pump	BSF	.11 H	.15 i LS *
Output	m ³ /h	110	150
Delivery pressure	bar	78	85
Strokes	1/min.	32	24
Delivery cylinder	Ø mm	230	250
Stroke	mm	1400	2100

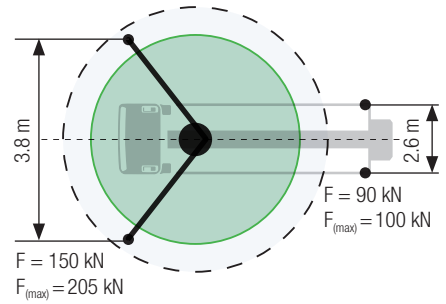
Delivery line boom max. 85 bar. All data maximum theoretical.

* for CE markets only ** Unfolding height depending on the frame height of the vehicle

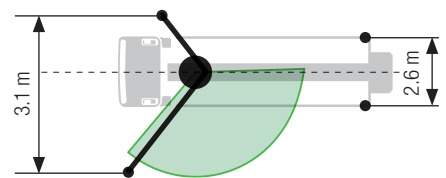
Reach information diagram, Support



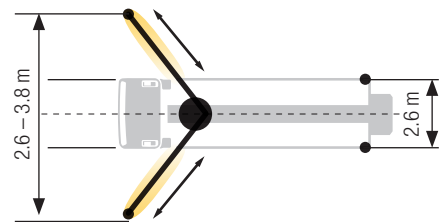
Standard – Full support



OSS* – One-side support



iSC** – Full-flexible support



Dimensions can differ depending on configuration.
Support width based on center of support leg.
Diameter of swivel plate 270 mm.

* non EEA, no CE marking

** EEA, CE marking

Delivery scope standard equipment

Support	Cleaning	Lighting
Full support system	Cleaning hose 8 m+2 m incl. bracket and nozzle	Control box lighting, LED
Support plates (4x), in 2 magazines	Compressed air connection, rear side	Control points lighting, LED
Swivel support plates	Container for sponge balls	Hopper lighting, LED
Control systems	Operating position at hopper to drain water pipe	Light for illumination pump and water box, LED
EOC 2.0 (Ergonic Output Control)	Water tank filling, one-sided, left	Miscellaneous
Ergonic 3	Water outlet on hopper, for small quantities (1/2")	Centralized lubrication system, electrical, incl. A-Joint
Ergonic Graphic Display 9,7" incl. Ergonic diagnosis interface	Water pump, 160 l/min 25 bar	Delivery line elbows 45° extended on both sides, reduced
Radio remote control with display	Water tank 700 l	Delivery note box, plastic
Core pump / Hopper	Delivery line	Operating instruction and spare parts manual (1x paper, 1x CD-ROM)
Agitator rotation automatic, dep. on pump direction	Deck delivery line in boom delivery line quality	Paintwork Putzmeister standard
Agitator safety switch off (RFID)	Delivery line PROLINE 2000 (2-layer)	Side panel right/left foldable, 400 mm
Hinged elbow with cleaning port	End hose 3 m DN125	Tool kit
Rubber collar on concrete hopper	Safety	
Spectacle wear plate DURO 22	Connections for hydraulic emergency supply (boom)	
Steps left and right, zinc-plated	Guardrail right side	
Wash-out port lid with locked slide pin	Mushroom button for horn, yellow	
	Towing eye	

See quotation for exact serial delivery scope.
Comprehensive range of options available on request.